

PLANNING DEPT.	DATE
PRODUCTION	DATE
F&B DEPARTMENT	DATE

1:5,000
20m Contour Intervals

Rainfall Shutdown Guidelines
Operations must cease in this area when rainfall amounts reach the following levels.
75mm during a single shift or 12 hour period.
100mm of accumulated rainfall in a 24 hour period.
50mm may be deducted per 24 hour period for drainage.
Take specific direction from the site supervisor for changing requirements.



Barkley Community Forest Harvest Plan Map

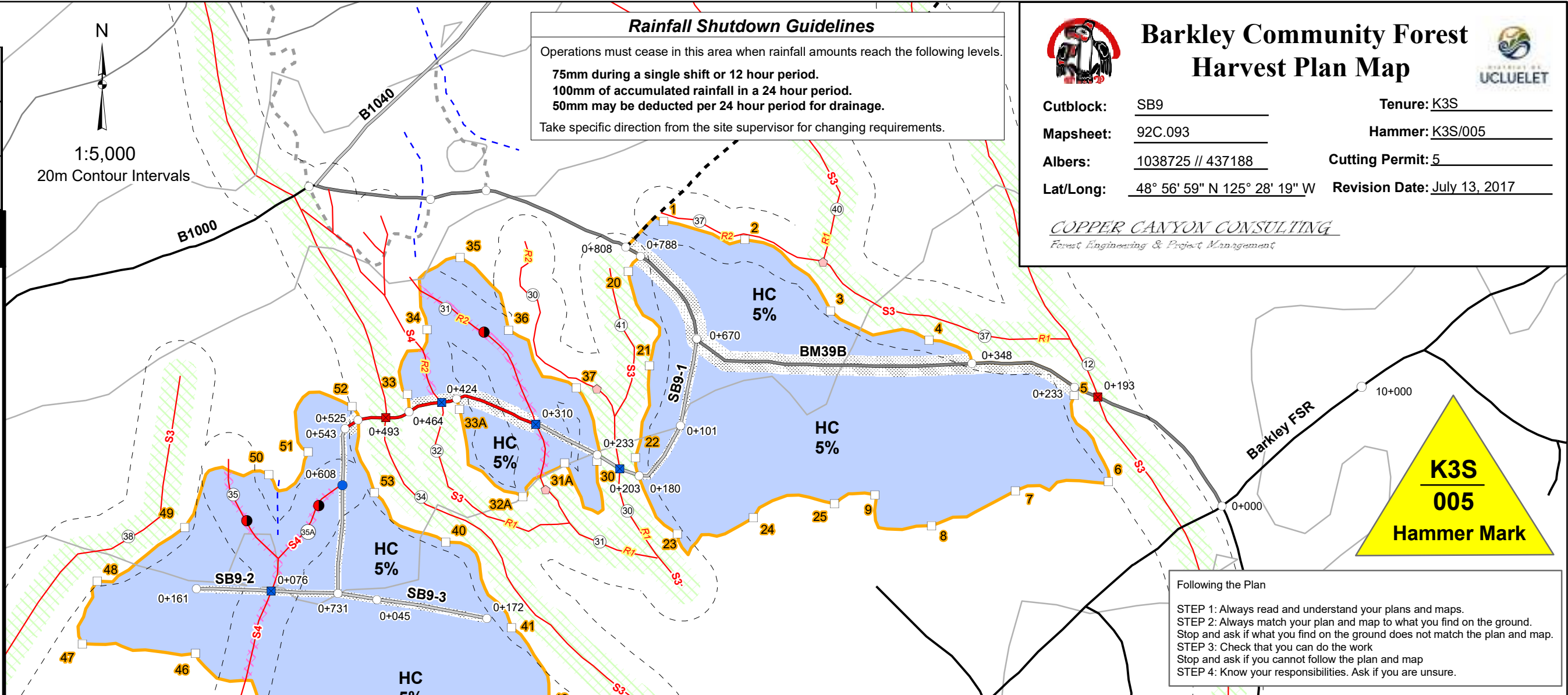


Cutblock: SB9 **Tenure:** K3S
Mapsheet: 92C.093 **Hammer:** K3S/005
Albers: 1038725 // 437188 **Cutting Permit:** 5
Lat/Long: 48° 56' 59" N 125° 28' 19" W **Revision Date:** July 13, 2017

COPPER CANYON CONSULTING
Forest Engineering & Project Management

MAP LEGEND

- Harvest Activities**
 - Falling Boundary
 - Yarding Direction
 - Hoe Chuck
 - Grapple
 - Heli
 - Heli Drop Zone
 - Split Line
 - WTRA
 - Focused Retention
 - TLA
 - Adjacent Blocks
 - Logged Blocks
- Road Features**
 - Rock Quarry
 - Spoil Site
 - End Haul Section
 - Deactivated
 - Built Road
 - Construction
 - Reconstruction
 - Road R/W
 - Road Station
- Culverts**
 - WBC
 - CMP
 - Bridge
- Riparian Management**
 - Designated Stream Crossing
 - Fish Streams (S1-S4)
 - Non Fish streams (S5, S6)
 - Non Classified Drainage
 - Gully
 - FSZ Stream
 - Reach Break/Fish Barrier
 - 5m Machine Free Zone
 - Wetland
 - RMA
 - RRZ
 - Waterbody
- Other**
 - Cruise Plot (Dropped)
 - Cruise Plot (Measure/Count)
 - CMT Stump
 - Heli Pad
 - Legal Line
 - Cruise Type Line
 - Rock Bluff
 - SU Type Line
 - Trail
 - Wildlife Tree
 - Bear Den



Following the Plan
STEP 1: Always read and understand your plans and maps.
STEP 2: Always match your plan and map to what you find on the ground. Stop and ask if what you find on the ground does not match the plan and map.
STEP 3: Check that you can do the work. Stop and ask if you cannot follow the plan and map.
STEP 4: Know your responsibilities. Ask if you are unsure.

Riparian Management Plan - SB9								
Stream - Reach	Riparian Classification			Activity in RMZ	Phase Prescriptions			Debris Management Requirements
	Class	RRZ	RMZ		Falling	Yarding	Loading	
12, 30(R1), 31(R1), 32(R1), 34, 37(R1), 38, 40(R1), 41	S3	20	20	Portions of RMZ inside block. Leave trees should be selected for windfirmness. Retain understory vegetation, saplings and non-merch along streams.	Away	Away	N/A	N/A
30(R2), 37(R2)	S4	0	30	Portions of RMZ inside block. Leave trees should be selected for windfirmness. Retain understory vegetation, saplings and non-merch along streams.	Away	Away	N/A	N/A
31(R2)	S4	0	30	Leave trees should be selected for windfirmness. Retain understory vegetation, saplings and non-merch along streams. Leave pre-existing deadfall trees and large woody debris (See Note 1). Do not disturb stream banks. 5m machine free zone. Cross at designated crossing.	Away	Away (See Note 1.)	Away	No limbing or bucking in streams. Hand clean introduced debris from streams.
32(R2)	S4	0	30	Leave trees should be selected for windfirmness. Retain understory vegetation, saplings and non-merch along streams. Leave pre-existing deadfall trees and large woody debris (See Note 1). Do not disturb stream banks. 5m machine free zone.	Away	Away (See Note 1.)	Away	No limbing or bucking in streams. Hand clean introduced debris from streams.
35, 35A	S4	0	30	Leave trees should be selected for windfirmness. Retain understory vegetation, saplings and non-merch along streams. Leave pre-existing deadfall trees and large woody debris (See Note 1). Do not disturb stream banks. 5m machine free zone. Cross at designated crossings.	Away	Away (See Note 1.)	Away	No limbing or bucking in streams. Hand clean introduced debris from streams.

Note 1. Where felled trees bridge the stream, they may be yarded if they can be lifted vertically without disturbing the stream bank or channel. Otherwise, leave bridged trees. Yarding approval required by RPF or RPBio.

OPERATING AREA		Salmon Beach		METHOD		HA	VOLUME
				HOE CHUCK (5% RET)		24.8	0
				GRAPPLE (% RET)			0
				HELI (% RET)			0
HAUL		UCLU	BATO	HARVEST AREA		24.8	0
Km.		11.5	13.8	R/W REMOVED		1.8	
SCALE:		1:5,000		TLA		0.0	
FIELD WORK		COPPER		ROAD PERMIT R/W		0.3	0
DATE		April-17		DISPERSED RETENTION (5%)		24.8	0
CHECKED		DRF					
DATE		2017		GROSS AREA		26.9	0

Harvest Plan Map

Geographic Midpoint:
48° 56' 59" North
125° 28' 19" West

SB9