

Rainfall Shutdown Guidelines

Operations must cease in this area when rainfall amounts reach the following levels.

- 75mm during a single shift or 12 hour period.
- 100mm of accumulated rainfall in a 24 hour period.
- 50mm may be deducted per 24 hour period for drainage.

Take specific direction from the site supervisor for changing requirements.

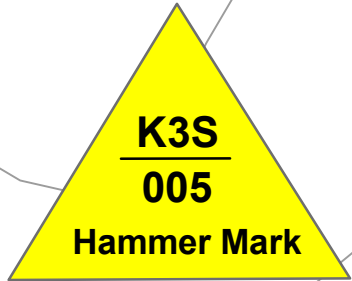
Following the Plan

- STEP 1: Always read and understand your plans and maps.
- STEP 2: Always match your plan and map to what you find on the ground. Stop and ask if what you find on the ground does not match the plan and map.
- STEP 3: Check that you can do the work
- Stop and ask if you cannot follow the plan and map
- STEP 4: Know your responsibilities. Ask if you are unsure.

Treatment of CMTs and Bear Dens

CMT's and Bear Dens are not to be disturbed. If an unmarked CMT or Bear Den is found, stop working, and consult site supervisor.

PLANNING DEPT.	DATE
PRODUCTION	DATE
F&B DEPARTMENT	DATE



MAP LEGEND

- Harvest Activities**
 - Falling Boundary
 - Yarding Direction
 - Hoe Chuck
 - Grapple
 - Heli
 - Heli Drop Zone
 - Split Line
 - Timber Leave Area
 - Logged Blocks
 - Wildlife Tree Retention Area
 - Focus Retention
 - Adjacent Blocks
- Road Features**
 - Rock Quarry
 - Spoil Site
 - End Haul Section
 - Deactivated
 - Built Road
 - Construction
 - Reconstruction
 - Road R/W
 - Road Station
- Culverts**
 - WBC
 - CMP
 - Bridge
- Riparian Management**
 - Designated Stream Crossing
 - Fish Streams (S1-S4)
 - Non Fish streams (S5, S6)
 - Non Classified Drainage
 - Reach Numbers
 - FSZ Stream
 - Reach Break/Fish Barrier
 - 5m Machine Free Zone
 - Wetland
 - RMA
 - RRZ
- Other**
 - Old Burn
 - Cruise Plot (In/Out)
 - CMT Stump
 - CMT Bark Stripped
 - Legal Pin
 - Legal Line
 - Trail
 - Rock Bluff
 - SU Type Line
 - Wildlife Tree
 - Bear Den



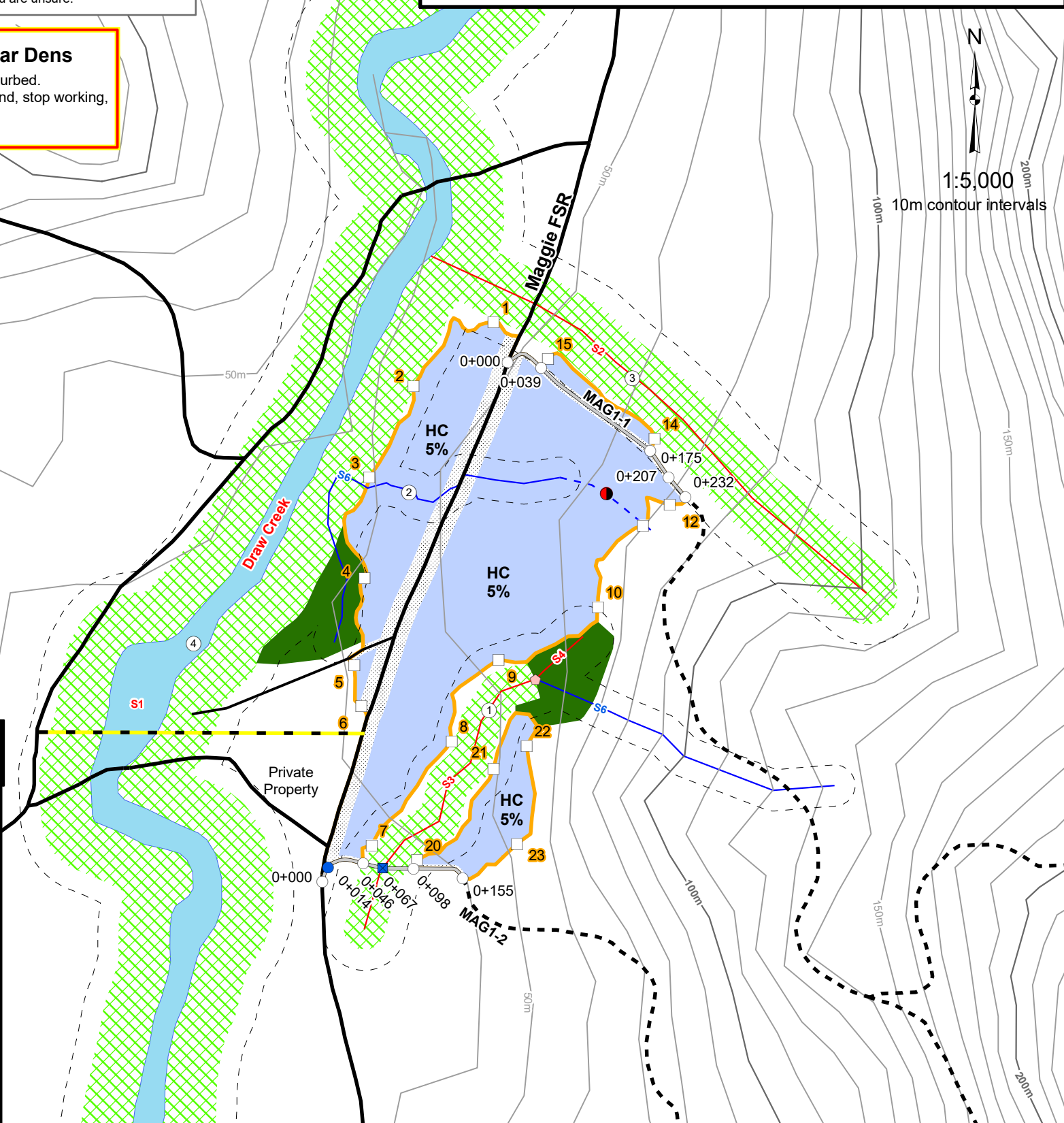
Barkley Community Forest Harvest Plan Map



Cutblock: MAG1
 Mapsheet: 92F.003
 Albers: 1041638 // 445788
 Lat/Long: 49° 01' 37" N 125° 25' 53" W

Tenure: K3S
 Hammer: K3S/005
 Cutting Permit: 5
 Revision Date: July 13, 2017

COPPER CANYON CONSULTING
 Forest Engineering & Project Management



1:5,000
 10m contour intervals

OPERATING AREA		Maggie Lake		METHOD	HA	VOLUME
m ³ /ha	ENG	CRUISE	BATO	HOE CHUCK (5% RET)	8.0	0
				GRAPPLE (% RET)		0
				HELI (% RET)		0
HAUL	UCLU	BATO		HARVEST AREA	8.0	0
Km.	20.2	9.1		R/W REMOVED	1.4	
SCALE:	1:5,000			TLA	0.0	
FIELD WORK	COPPER			ROAD PERMIT R/W	0.0	0
DATE	April-17			DISPERSED RETENTION (5%)	8.0	0
CHECKED	DRF					
DATE	2017			GROSS AREA	9.4	0

Riparian Management Plan - MAG1

Stream - Reach	Riparian Classification				Phase Prescriptions			Debris Management Standard Procedure: No limbing or bucking in streams. Clean introduced debris from streams if the debris is blocking fish passage or destabilising the stream (eg. could form debris jams in high flows).
	Class	RRZ	RMZ	Activity in RMZ	Falling	Yarding	Loading	
4 (Draw Creek)	S1	50	20	5% retention. Leave trees should be selected for windfirmness. Retain understory vegetation, saplings and non-merch along streams.	Away	Away	N/A	N/A
3	S2	30	20	5% retention. Leave trees should be selected for windfirmness. Retain understory vegetation, saplings and non-merch along streams.	Away	Away	N/A	Standard Procedure.
1 (R2)	S3	20	20	5% retention. Leave trees should be selected for windfirmness. Retain understory vegetation, saplings and non-merch along streams.	Away	Away	N/A	Keep transportable logging debris out of stream channel.
1 (R1)	S4	0	30	5% retention. Leave trees should be selected for windfirmness. Retain understory vegetation, saplings and non-merch along streams.	Away	Away	N/A	Keep transportable logging debris out of stream channel.
2	S6	0	20	5% retention. Leave trees should be selected for windfirmness. Retain understory vegetation, saplings and non-merch along streams. Leave pre-existing deadfall trees and large woody debris (See Note 1). Do not disturb stream banks. 5m machine free zone.	Away	Away	Away	Standard Procedure.

Harvest Plan

Geographic Midpoint:
 49° 01' 37" North
 125° 02' 53" West

MAG1