

Barkley Community Forest Corporation

B.C. F. C.

PO Box 707, 1971 Peninsula Road, Ucluelet, BC, V0R 3A0

BCFC Board Meeting Minutes January 28, 2021

January 28, 2021

Meeting held by Zoom video call and in office participants

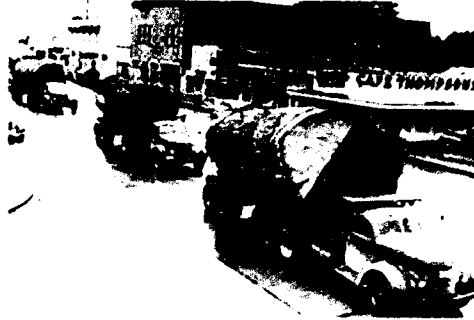
Attendance in Office: Terry, Dario, Ken also on Zoom

Attendance via Zoom: Donna, Gary, James, and Noah

General Manager: Zolie Shafer

Guest Attendance: Sally Leigh Spencer, Dave Clough

Notes: Ken , not all topics reported in the sequence they were addressed.



Call to order: Terry called meeting to order at 3:03pm Some Zoom organization needed Terry will include the Zoom meeting link Upfront in the next meeting and/or agenda notice.

Terry noted that the planned In Camera meeting for 8:00 pm on Jan 28, 2021 was cancelled.

1) Agenda for the January 28, 2021 BCFC Regular Board meeting

Motion by James seconded by Dario to accept the agenda as presented. Carried

2) Minutes of Previous BCFC Board meetings

*Motion by Donna seconded by Dario to approve the December 9, 2020 regular meeting minutes
Carried*

3) Reports from General Manager

i) Harvesting

- Confirmed by Terry that no bids had been received on the advertised timber sale which closed Jan. 28, 2021 at 3:00pm
- GM noted that the Forest Stewardship plan for the CF is due by August of this year. Work can start but final direction must come from the strategic guidance the Board is developing around old growth and riparian management. A revised management plan is also required prior to the FSP. GM noted that if all cutting permit and road permits are approved and in place, FSP does not have to be approved until later in the fall.
- Zolie noted that he had now received the first draft of engineering and cruising on new harvesting blocks in the upper Draw Creek watershed. Volumes, species, and timber quality look particularly good. Timber sale here later in 2021 should generate a strong price. Final volumes and maps and proforma with recommendations to be brought to a future meeting.

- Christmas Tree area discussion. see Point 4 Initiatives of these minutes.
- Final volumes of scale from 2020 timber sale (900m3) completed at Avalon DLS. When payment on tis scale is received, all 2020 timber sales and payments will be complete.
- Director Corlazzoli questioned plan for RW timber on Blocks SB15, SB16, SB18 now that there were no bids on timber sale. GM will plan to sell this timber with other timber soon.

ii)) Financial:

GM had circulated financial summary as at Dec 31, 2020

- Plan not discussed. GM will rework the plan now that the proposed timber sale will not be sold on the timeline in the last draft statement. Next plan will incorporate Draw Lake timber sale.

3Aii) Financial 2020 BCFC Financial External Audit

Donna noted that our BCFC Accountant had all the information assembled and given to the External auditor we have engaged to do the required BCFC audit for 2020 (due June 2021).

Discussion by the Board regarding audit costs. Board members concurred that well prior to the BCFC AGM for 2021, GM and Accountant should seek estimates for completing the annual audit for 2021 (to be reported in 2022) from other qualified accounting firms before making a final recommendation for the 2021-year audit.

4) Initiatives/ Sub Committees:

a) Old growth strategy and stream classification and remediation

Presentation by Sally Leigh Spencer. Ecologist / Biologist, Upland Issues.

Sally has many years of working with the local forest industry and others in the Barkley Sound Area, doing field surveys and interacting with Provincial and Federal Governments on habitat and environmental protection measures.

Sally referred to the map prepared by Forsite Consultants, Pat Bryant, showing the outline of the suggested requirements for protection of areas (non harvest) for environmental considerations including species and ecosystems at risk (mainly Marbled Murrelet), sensitive terrain, and riparian zones (see Clough comments)

Tables were also presented showing the area in hectares (% of total area of CF0 in various categories (old growth, cedar leading etc.

Sally discussed options and provided recommendations for moving existing Provincial draft protected areas (Wildlife Habitat Areas, WHAs) and Old Growth Management Areas OGMAs) to other areas of equal size within the CF which have more suitable long-term habitat for the identified need as determined during many surveys and field work.

Sally indicated her work on this project to this point is now complete and further work is dependant on decisions from the Board on moving WHSs or OGMAs or final thoughts on protection of old growth.

Presentation by Dave Clough, Fisheries and Habitat Biologist, Stream, Riparian Zone and Stream Remediation Specialist

Dave has many years experience working in the Barkley, Toquaht, Maggie and Kennedy River watersheds as well as all across Vancouver Island looking at stream surveys and remediation plans for habitat improvement in streams, in riparian areas, and upland areas that ultimately impact stream habitats.

Dave provided a description of reviewing reports and past reports and again working with Forsite to ensure and accurate:

- Location and mapping of all water courses in the CF area

- Classifying all of all know streams in accordance with Provincial systems (S-1 to S-6 and NCRs) . Dave noted the indicated length of stream in each class.
- Describing a riparian reserve zone as laid out in Provincial guidance for stream and stream class. The area protected riparian zones were noted.

All this information is now the draft maps provided by Forsite.

Dave further summarized his thoughts from the review and past knowledge. Some points

- The Maggie / Draw watershed is a critical and somewhat unique fish habitat system with one of the few summer Coho runs (along with the Toquaht river system) in BC
- The Maggie River below the lake is critical and the fish ladders at the outlet of the lake are critical as well. The booms established to protect the fish ladders are broken and not functioning. Free logs in the lake have entered the fish ladders and rendered them highly ineffective. This is high priority needs repair.
- Upland review and work to stabilize old roads and development is critical to be done first.
- The Draw, Paradise and Redford sub watersheds are high value but suffer from the legacy effects of past development now lacking the normal pool riffle structure of good habitat streams. In many stretches the needed large old growth trees which topple and form the basis for the pools are not there. In high water the heavy flow moves gravel and rocks down to fill any pools and create flat bottom non-diverse stream beds. This is high priority to establish stands Cedar and hembal in riparian areas to contribute large trees in future. Alder does not do it.
- Smaller feeder streams have faired better. These streams (1–2-meter width) have low enough flow and width that second growth trees and alders can influence the stream channel as well as providing shade, cover and food for fish.

Board decision.

Board appreciates the expertise and work put I into this by Sally, Dave and Zolie.

Board established a sub-committee (Dario , Gary, James and Ken) to meet and review the data in more detail. Sub Committee will also:

- Review the amount of old growth by species retained in indicated reserves and /or the amount of second growth by species indicated in reserves that will become old growth.
- Review options to increase the area of the CF reserved to add to this plan for old growth conservation and in default conserve overall biodiversity of all plant and animal species and additional watershed protection.
- Review and make final recommendations on a plan to request Province move existing murrelet protections areas to more suitable habitat so that can be proceeded with.

And finally, work with the GM and analysts to identify what impact any options might have on the CF regarding:

- Future rates of harvest (AAC)
- Amount of old growth in particular Cedar available for harvest
- Economic impact of conserving additional areas of old growth cedar beyond which are reserved in the current management plan

The outcomes of this review and options will be put to the full Board for review and decision as early as possible to allow the GM to carry on with a new management plan and FSP for the CF needed in the summer of 2021

Note: Noah informed the Board that Toquaht Nation had purchased lands outside of the Barkley CF which include the Lower Maggie River watershed from the Lake outlet to the ocean. The previous landowner has rights to log certain parcels of land over the next two years. Noah expressed the support of Toquaht Nation to conserve and enhance the watershed and fisheries habitat in the entire Maggie system and the willingness of Toquaht Nation to continue this strategy on the Lower Maggie River adjacent to Toquaht Nations' private land holdings.

b) Approval from the Ministry of Forests, Lands, Natural Resource Operations and Rural Development for the establishment and use of a recreational Bike Trail Network within the area of the Community Forest.

Letters of support have been received from Parks Canada and Ucluelet First Nation.

Notation made that the trails noted on the existing draft plans might have to be changed if the marbled murrelet reserve is moved. The trails may not be a compatible use under certain legal designations by the Province. James and Zolie to talk to the proponent of the study. Zolie can supply updated maps.

Donna has the application completed to a point where it is ready to go with final input from GM and maps.

c) Christmas trees.

- GM reported that an area has been found in the community forest. Establishment of that area for use as a Christmas tree free use area would require obtaining a special use permit (SUP) from the Province which is straight forward.
- GM noted that costs of seedlings and planting is not significant but costs of engaging experienced tree pruners to tend the trees each year might be prohibitive.
- Board asked the GM to continue with establishing the SUP without commitment to pruning.

d) Map and Fact Brochure Sub committee

- Subcommittee has met. Additional items added to the brochure. GM getting the draft updated and should be ready for Board review at the next meeting

d) BCFC Sub committee _Policies

- Subcommittee met before the regular Board meeting. Draft policies to be circulated and discussed at the next Board meeting.

e) BCFC Sub committee _ Record Keeping

- Meeting scheduled for week of Feb 8-13

g) BCFC Sub Committee _ Actions to be taken in lieu of a formal BCFC open house

- Sub Committee designated consisting of Terry, Zolie and James. Timeline of end of March rollout.
- Several options and opportunities were brought up including, virtual open house, webinars, simply putting a static display on website or holding an actual event in a venue later in the year.
- GM suggested looking at the Port Alberni CF presentation (virtual open House) used last year
- Dario reported out on query to Consultant Lance Blackwell. Mr. Blackwell provided Dario with some ideas and costs which need to be considered by the subcommittee. Examples of Mr. Blackwell's' work in this regard including drone footage and displays available at: vimeo.com/showcase/806340

h) Logo

- Logo looks particularly good. Noah will finish off and distribute useable editions including letterhead with address at the bottom of page.

5) Correspondence:

- None noted

6) Items brought out of the BCFC Board of Directors IN-Camera meeting

- In Camera meeting scheduled for Jan 28 cancelled due to no bids received on timber sale.
- No items brought forward from the Jan 12, 2021 BCFC In Camera meeting.

9) Date of Next Meeting

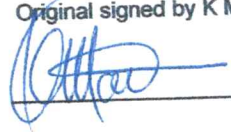
March 2, 2021 at 10:00 am. via zoom.
Regular meetings now scheduled for the first Tuesday of each month commencing at 10:00am

10) Adjourn
Meeting adjourned at 5:14 pm

Approved: - Original signed by T. Smith, Chair

Handwritten signature of T. Smith in blue ink, written over a horizontal line.

Original signed by K Matthews, secretary

Handwritten signature of K Matthews in blue ink, written over a horizontal line.